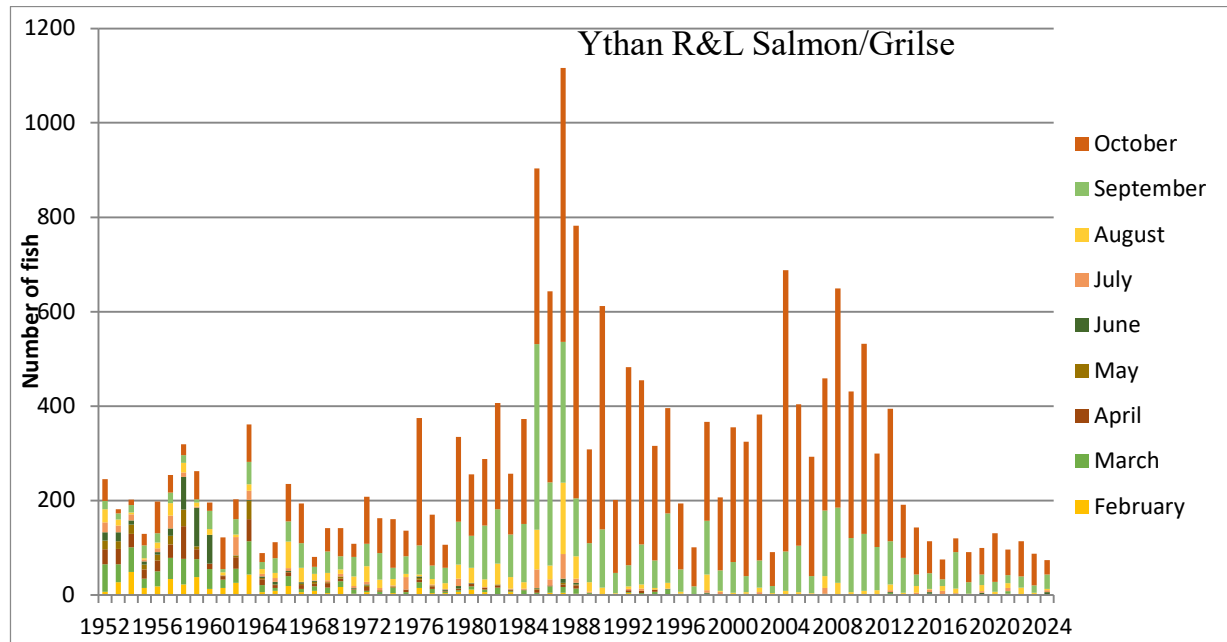
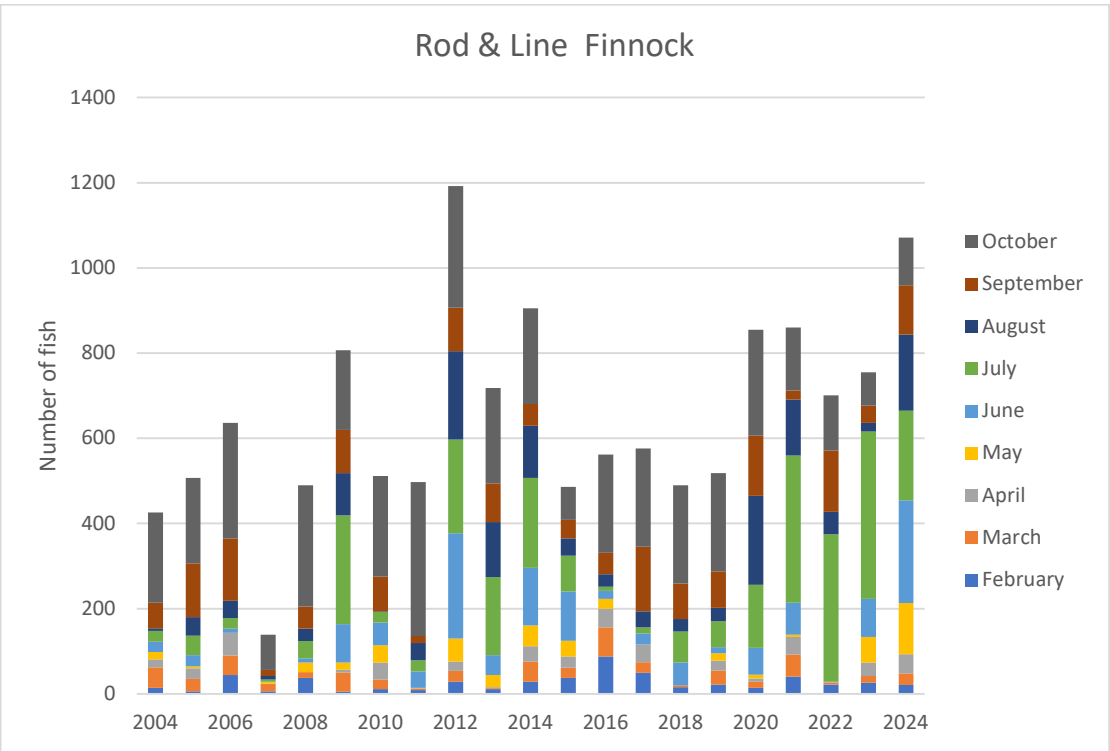
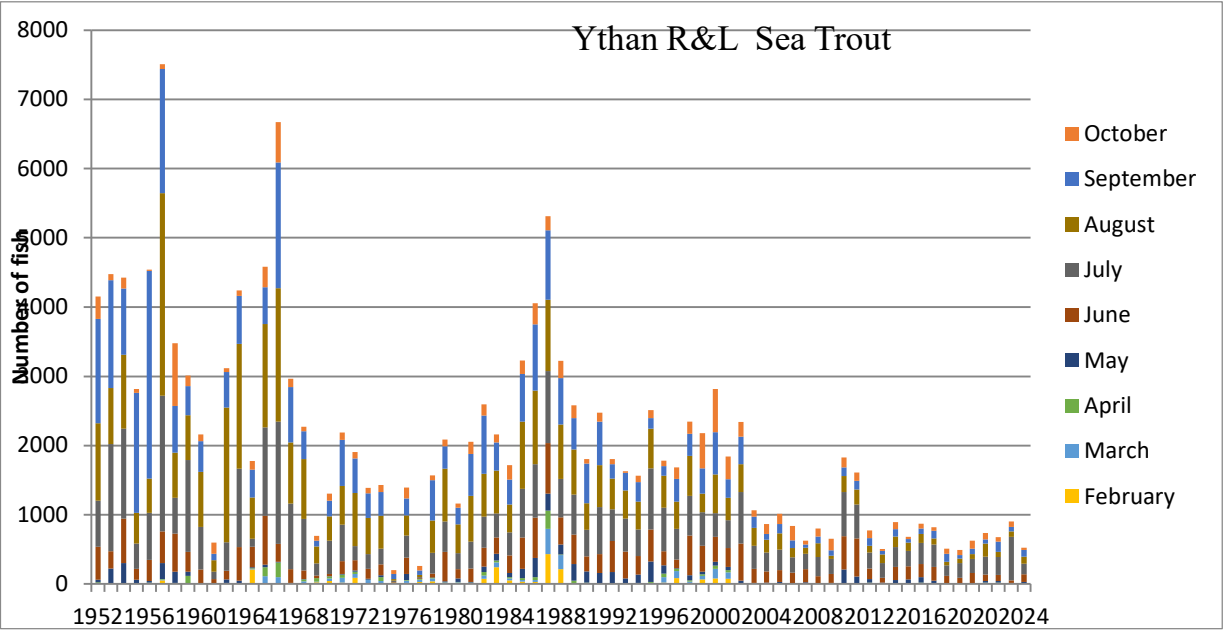


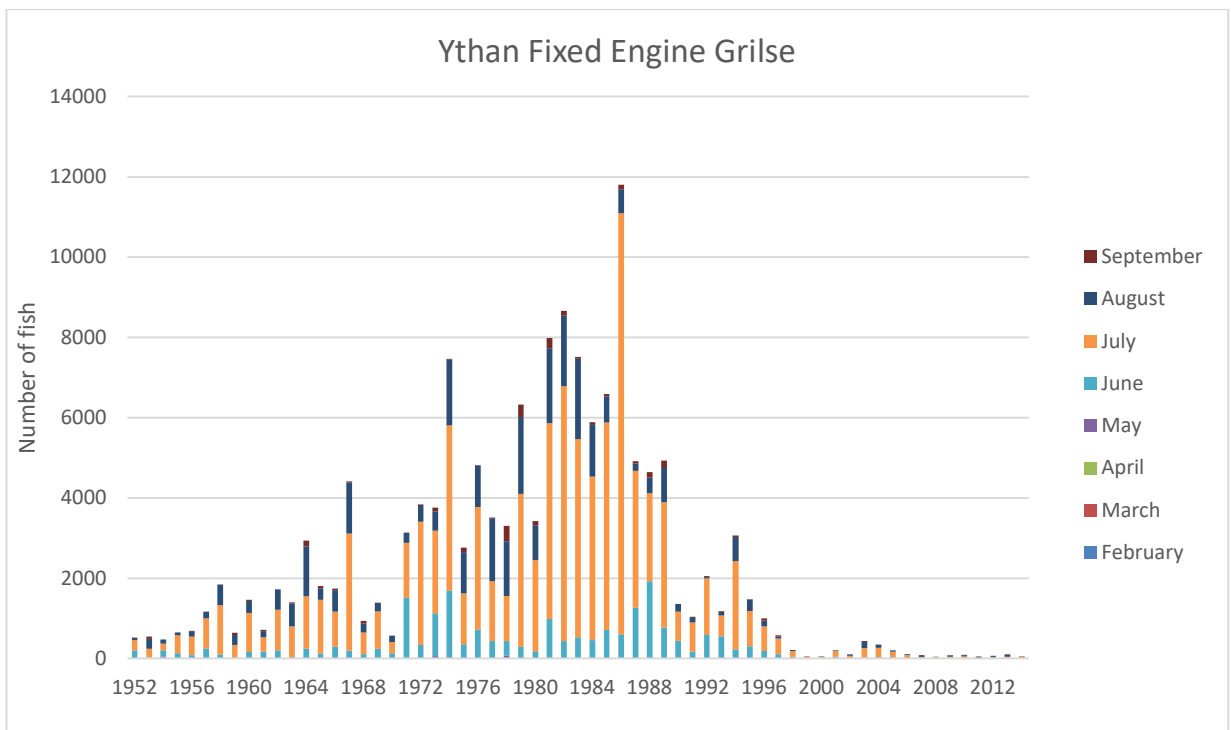
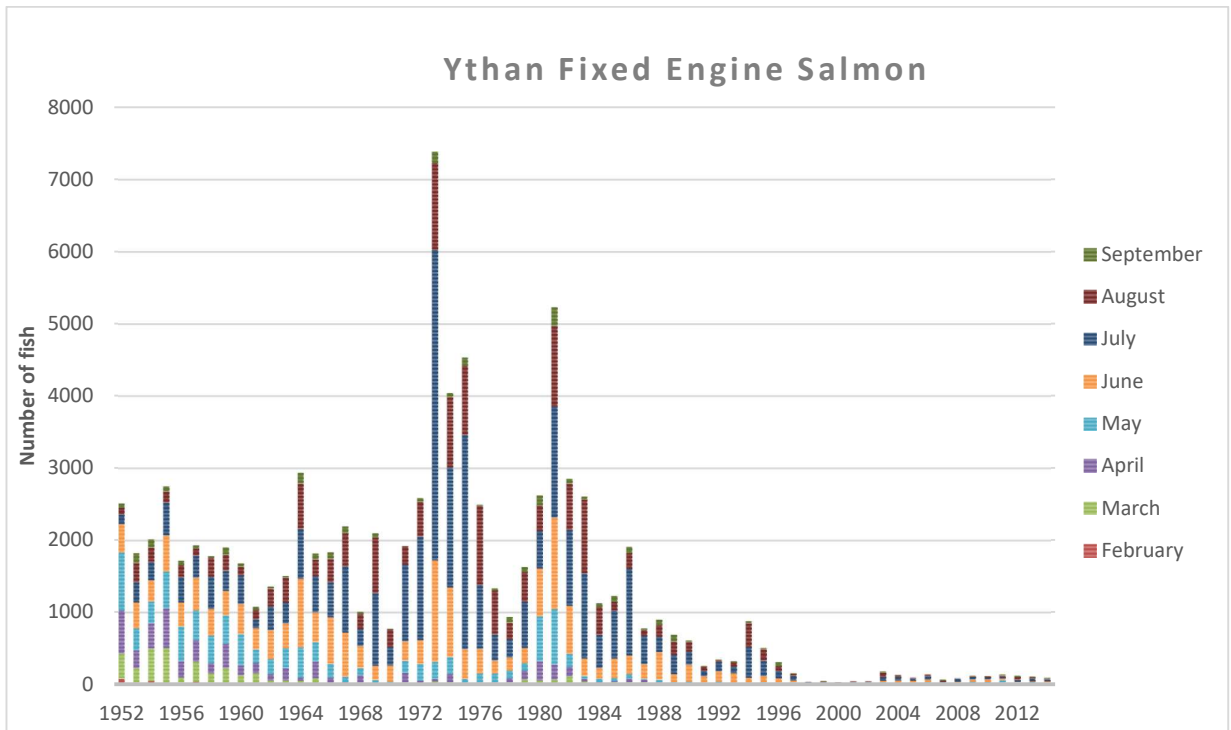
HIGHS and LOWS

Another document in this section, 'YthanFisheries24' shows reported catches within the Ythan Salmon Fishery District as running five year averages to best illustrate trends. That document also includes a commentary on the catches which notes wide variations in reported annual catches. In this document the catches as reported year by year are presented to show these wide variations reported year on year. Dry years lie behind some of the low salmon/grilse catches by anglers but there must be additional factors at play in the sea trout catches by anglers which are mainly taken in the estuary and tidal part of the river.

The data (1952 to 2024) used in the figures below is Crown Copyright and the source is the Marine Directorate.







The year on year variations are quite striking both in rod and in net catches.